

Insight

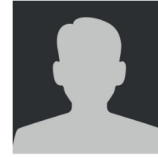
## Commercial dispute resolution – Essential Intelligence: The belt and road initiative

LALIVE Associate Baptiste Rigaudeau provides insights in an expert analysis chapter highlighting the impact of China's Belt and Road Initiative in a 2021 report published by the International Comparative Legal Guides.

The report provides useful reference and discussion points for Belt and Road Initiative disputes, in project finance, investment and construction across a range of regions, particularly, Europe, the Middle East, and Central, East and South East Asia.

To download the report, click [here](#).

Author



**Baptiste Rigaudeau**  
Senior Counsel  
Geneva